

GT710/8710

Low-Energy

ADA Swing Door Operator

Where SOLUTIONS are AUTOMATIC



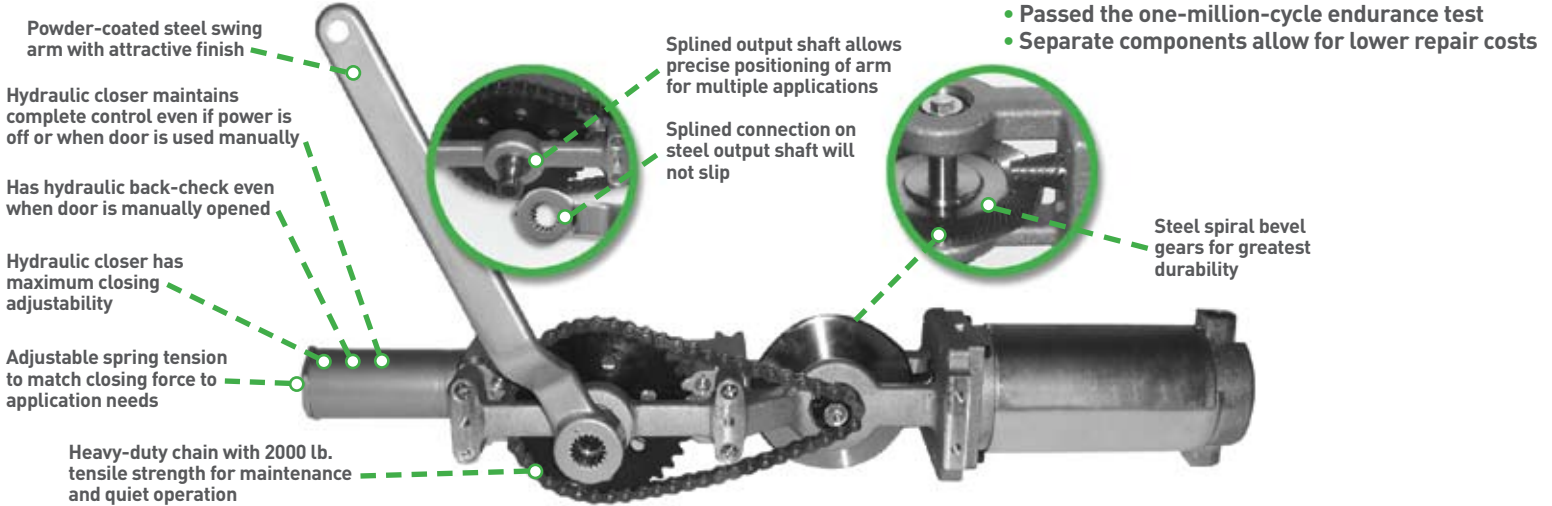
Product Features and Benefits

- Hydraulic design offers **proven reliability**
- Adjustable closing speeds to **enhance energy savings**
- Manual mode requires very little pressure to open **promoting ease of operation**
- Approved on fire door assemblies rated up to 3 hours, **maintaining security and safety**
- Hydraulic back-check during windy conditions **protects the door and operator from damage**

GT710/8710 Low-Energy ADA Swing Door Operator



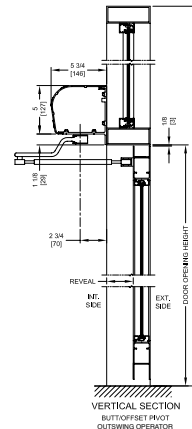
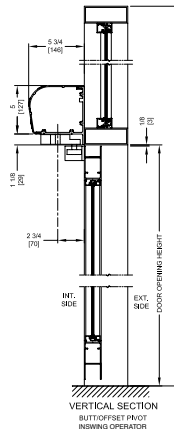
The NABCO GT710/8710 Low-Energy Operator is engineered for interior and exterior use, and designed to automate essentially any new or existing door frame. The GT710/8710 operates in both automatic and manual modes with a hydraulic back-check that protects the door and mechanical operator from damage when forced open in windy conditions or when manually operated. The GT710/8710 Operator has been approved for use on fire door assemblies rated up to 3 hours. The low-energy performance, combined with the adjustable opening and closing speeds, reduces energy consumed, which offers a prompt return on your investment.



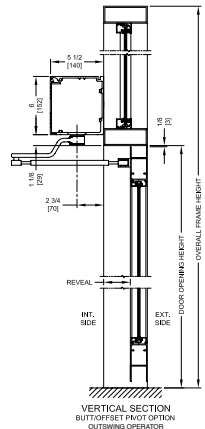
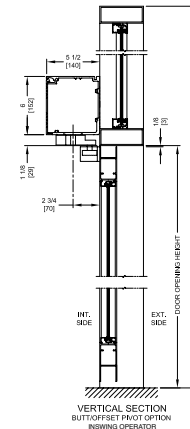
PRODUCT INFORMATION

Header dimensions	Side load - 5" H X 5 3/4" D (GT710) curved header Side load - 6" H X 5 1/2" D (GT8710)
Standard finish	Clear and dark bronze anodized
Optional finishes	Painted, clad, special anodized
Mounting	Surface applied or overhead concealed
Installation types	Push or pull
Operating voltage	120 VAC @ <5 amps
Auxiliary power output	12VDC 700mA
Operator drive	Electro-hydraulic
Motor voltage	Pulse width modulated
Motor type	1/8th HP @ peak
Control type	Microprocessor
Door panel weight	300 lbs.
Adjustable open	Force and speed
Adjustable close	Force and speed
Closing method	Spring/hydraulic (with selectable power assist)
Adjustable opening angle	Up to 145°
Power boost close	Selectable
Basic features	Low-energy operation Push and go Obstacle detection in opening and closing cycles Sequential or timer mode operation LCD display for programming and diagnostics Open- or closed-circuit safety inputs Momentary or maintained activation
Switch modes	On, off, hold-open
Opening and closing speed	Adjustable
Hold-open time	Adjustable (0-30 seconds)
Code compliances	ANSI A156.19/ANSI A117.1
Approvals	UL, ULC

GT710 Operator



GT8710 Operator



CONFIGURATIONS:

The GT710/8710 is available for multiple configurations, such as single doors, simultaneous pairs, and dual-egress, as well as the Opman configuration, which is a single continuous header for a pair of doors containing a manual closer on one side and an automatic operator on the other.

NABCO Service and Specifications

Along with the NABCO factory branches, NABCO has the largest independently owned network of automatic door distributors in North America. Their friendly, qualified installers and technicians always strive to exceed your expectations from install to after-sales service. NABCO's factory branches and independent distributors provide AAADM-certified technicians to ensure your doors meet all ANSI A156.10/A156.19 standards.

Complete three-part specifications and CAD drawings are available on the NABCO website.



Member of the Nabtesco Group

NABCO ENTRANCES INC.

S82 W18717 Gemini Drive | Muskego, WI 53150 | 877-622-2694 | Fax 888-679-3319

www.NABCOentrances.com | Email info@nabcoentrances.com



Distributed by: